

Locations Canada, China, Switzerland

Dates 01/09/2019 - 31/12/2022

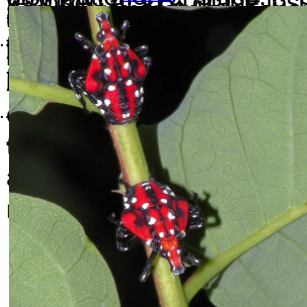
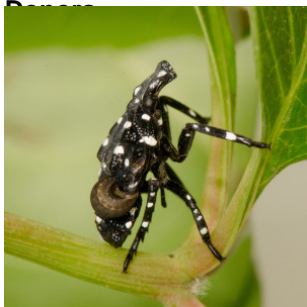
Summary

The spotted lanternfly is an Asian polyphagous pest that feeds on more than 70 plants by sucking the sap out of from leaves, stems and trunks. It was found in Pennsylvania in 2014 and has since expanded its geographical distribution. The spotted lanternfly is a species of cicada that is native to China and Japan. It is a highly mobile pest that can travel long distances on vehicles and other transport. The damage caused by the pest, its sugary excrement and sooty mold has been found on a wide range of plants including grapevines, hops, and various trees. In 2014, the pest was first reported in Pennsylvania, USA. It has since spread to other parts of the USA, Canada, and Europe. In 2019, it was first reported in Switzerland. The pest is currently under investigation in Switzerland and other parts of Europe. The pest is a highly mobile pest that can travel long distances on vehicles and other transport. The damage caused by the pest, its sugary excrement and sooty mold has been found on a wide range of plants including grapevines, hops, and various trees. In 2014, the pest was first reported in Pennsylvania, USA. It has since spread to other parts of the USA, Canada, and Europe. In 2019, it was first reported in Switzerland. The pest is currently under investigation in Switzerland and other parts of Europe.

The problem

What we are doing

Results so far



<https://www.cabi.org/what-we-do/cabi-projects/>