

**Locations** Australia, Canada, United States

**Dates** 01/01/2008 - Ongoing

**Summary**

**The problem**

Although closely related, Oxeye daisy is an invasive weed in places like North America and Australia, while Shasta daisy remains a garden favourite. Oxeye daisy is highly invasive and difficult to control by conventional means.

**What we are doing**

Biological control agents are being investigated as a means of controlling Oxeye daisy. Biological control agents are being investigated as a means of controlling Oxeye daisy.

**Results so far**

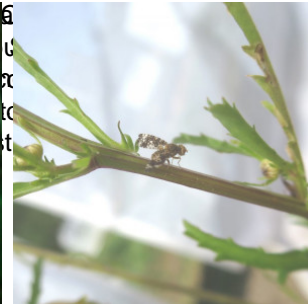
Biological control agents are being investigated as a means of controlling Oxeye daisy. Biological control agents are being investigated as a means of controlling Oxeye daisy.

**Donors**

Biological control agents are being investigated as a means of controlling Oxeye daisy. Biological control agents are being investigated as a means of controlling Oxeye daisy.

Biological control agents are being investigated as a means of controlling Oxeye daisy. Biological control agents are being investigated as a means of controlling Oxeye daisy.

Biological control agents are being investigated as a means of controlling Oxeye daisy. Biological control agents are being investigated as a means of controlling Oxeye daisy.



<https://www.cabi.org/what-we-do/cabi-projects/>