



Locations United States

Dates 01/01/2009 - 31/12/2015

Summary

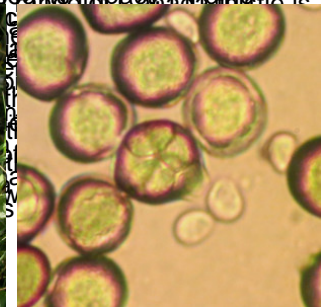
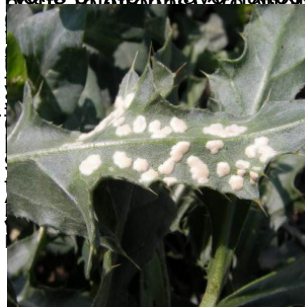
The problem

What we are doing

Results so far

Donors

Despite the name, Canada thistle's natural home is Eurasia. It has spread throughout the temperate world to become one of the worst weeds in rangeland and crops. One reason for this is the absence of the natural enemies that attack it in its area of origin. In North America six insect natural enemies have been introduced as biological control agents to try to control the weed but they have had little impact. CABI has been investigating whether diseases causing fungi or viruses could be more specific than insects. Some of the fungi that have been investigated are *Sclerotinia sclerotiorum* and *Ascochyta blight*. These fungi cause stem rot and seedling rot respectively. The viruses investigated are *Chrysochloris virus* and *Chrysochloris virus*. The viruses are being investigated as they have been found to cause stem rot and seedling rot in Canada thistle. The viruses are being investigated as they have been found to cause stem rot and seedling rot in Canada thistle. The viruses are being investigated as they have been found to cause stem rot and seedling rot in Canada thistle.



<https://www.cabi.org/what-we-do/cabi-projects/>